



FEDERAL

THE WEATHER SPHERE BRINGS UNIVERSITY, FEDERAL, STATE AND PRIVATE INDUSTRY TOGETHER.

NOAA Storm Prediction Center

NOAA's Storm Prediction Center (SPC) provides hazardous weather forecasts including critical tornado and severe thunderstorm watches to protect life and property and improve economic productivity.

Part of the National Weather Service's National Centers for Environmental Prediction, the SPC is the primary center of expertise for forecasting short-term hazardous weather events. The center makes maximum use of observations, numerical forecast models, Doppler radar, geostationary satellites, and the latest science and technology in generating their forecasts.

Every tornado and severe thunderstorm watch issued in the United States originates at the SPC. In addition, SPC forecasters create one and two-day forecasts of thunderstorms, severe thunderstorms and areas susceptible to wild fires. Technical discussions and short term guidance forecasts are issued for mesoscale conditions that are expected to produce hazardous weather.

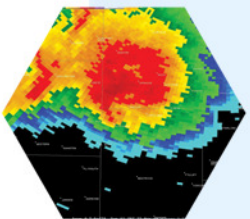
In addition to working with field offices and other national centers within the NWS, the SPC collaborates with local, national and international communities, as well as various NOAA agencies and academia. This collaboration increases the understanding of hazardous weather environments across the United States and promotes the infusion of new science and technology into the SPC's operation.

The SPC is the nation's only all hazards weather forecast center. Its forecasters deal with hazardous weather 24 hours a day, 365 days a year. The SPC maintains a continuous weather watch over the entire contiguous 48 states and issues most of its products on an as-needed, event-driven basis. The center was established in Washington, D.C. in 1952, moved to Kansas City in 1954 and then to Norman in 1997.



"The Storm Prediction Center provides its partners and customers a one stop source of mesoscale meteorological information."

Joseph Schaefer
Director



National Weather Center
120 David L. Boren Blvd.
Suite 2300
Norman, OK 73072

Phone: 405.325.2040
Fax: 405.325.2938



www.spc.noaa.gov
www.weathersphere.org

NOAA is supportive of collaboration throughout the environmental information enterprise, as described in the NOAA Policy on Partnerships in the Provision of Environmental Information, and in this context, NOAA is supportive of the collaborative framework established in the National Weather Center facility and across the University Research Campus in Norman, Oklahoma. However, NOAA supports collaborative relationships with all members of the nation's environmental information enterprise – NOAA's collocation with the University of Oklahoma Weather and Climate programs and other participants in "The Weather Sphere" should not be taken as implying a special relationship with these participants.