



# UNIVERSITY

THE WEATHER SPHERE BRINGS UNIVERSITY, FEDERAL, STATE AND PRIVATE INDUSTRY TOGETHER.

## Oklahoma Wind Power Initiative

The Oklahoma Wind Power Initiative (OWPI) is a collaborative enterprise between the University of Oklahoma and Oklahoma State University. Created in 2000, it began as a research effort to conduct a wind resource analysis of the state of Oklahoma and create the renowned Oklahoma Wind Resource Map.

After the completion of the map, OWPI has continued research and also focused on educating the general public and state leaders about wind energy and its economic and environmental benefits. This has been accomplished in a number of ways, including a variety of emerging energy technology workshops and conferences. In part through the efforts of OWPI, Oklahoma has seen over \$1 billion in commercial wind energy development in the last five years. OWPI also continues to improve and monitor the wind resource through installation of meteorological towers across the state.

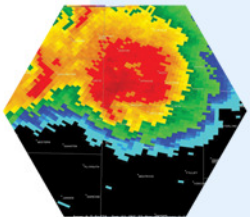
The work is ongoing. Representatives from OWPI travel the state providing presentations to local civic clubs, schools, universities and state and regional conferences. Workshops for the general public, teachers and state representatives are also held. The organization has exhibits at various statewide conferences and events. In addition, OWPI collects and analyzes wind data from meteorological towers across the state.

OWPI has been nationally recognized by the Wind Powering America organization, a division of the U.S. Department of Energy, as the best wind working group of 2006.



"The renewable energy era has begun, and the Oklahoma Wind Power Initiative is the leading wind power research and education group in the country."

J. Scott Greene  
Director



Sarkeys Energy Center  
100 E. Boyd  
Suite 410  
Norman, OK 73019

Phone: 405.325.8870  
Fax: 405.447.8455



[www.ocgi.okstate.edu/owpi](http://www.ocgi.okstate.edu/owpi)  
[www.weatherphere.org](http://www.weatherphere.org)