

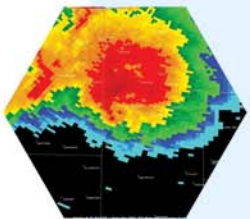
# UNIVERSITY

THE WEATHER SPHERE BRINGS UNIVERSITY, FEDERAL,  
STATE AND PRIVATE INDUSTRY TOGETHER.



“CSA is the geospatial catalyst in the Weather Sphere, applying and advancing geographic information science and technology to investigate issues that cut across meteorology, climatology, geography and social sciences.”

May Yuan  
Director



Center for Spatial Analysis  
3100 Monitor Avenue  
Suite 180  
Norman, OK 73072

Phone: 405.325.3131  
Fax: 405.325.1595



[www.csa.ou.edu](http://www.csa.ou.edu)  
[www.weathersphere.org](http://www.weathersphere.org)

## Center for Spatial Analysis

The Center for Spatial Analysis (CSA) is a multidisciplinary center specializing in research and applications of geographic information science and technology (GIST), including geographic information systems (GIS), remote sensing and global positioning systems.

GIST provides an integrated platform for analysis of the complex dynamic systems that are inherent in weather and climate phenomena.

In the context of atmospheric science, CSA leads many Weather WxGIS research efforts at the University of Oklahoma, and explores how WxGIS can aid the atmospheric and meteorological sciences.

A strong geospatial infrastructure at CSA compliments the WxGIS research agenda. With funding from federal, state and local governments, CSA has acquired and updated geographic data sets across the United States and Oklahoma. CSA hosts the Oklahoma Geospatial Data Clearinghouse featuring state-wide and local comprehensive, quality, high-resolution geospatial data.

CSA also develops internet GIS capabilities to enhance data accessibility and geospatial information communication and to provide geographic information for public participation in local decision making. Fundamental and applied GIST projects at CSA build geospatial data, examine human-environment interactions, investigate how natural hazards affect human life, and explore novel approaches to represent, analyze and mine weather and climate data to enrich information that is relevant to society.

